

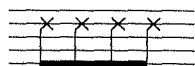
Monika Kędziora

in speculo

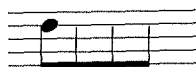
*Utwór skomponowany specjalnie
na XXXV Konkurs Młodego Muzyka w Szczecinku
- SZCZECINEK 2012*

Znaki chromatyczne dotyczą tylko nut, przed którymi są umieszczone /
the accidentals apply only to the notes they precede.

uderzanie w klapy / key slaps



powtarzanie tego samego dźwięku / repeat the same pitch



czas realizacji grup rytmicznych o charakterze accelerando lub ritardando
oraz ilość dźwięków w grupie - ad libitum /
time for playing rhythmic groups like accelerando or ritardando
and number of notes in the group - ad libitum



frulato / fluttertongue



flażolet / harmonic



czas trwania / duration ca 5`

in speculo

flauto

per flauto

Utwór skomponowany specjalnie na XXXV Konkurs Młodego Muzyka w Szczecinku - SZCZECINEK 2012

Monika Kędziora
(2011)

♩ = ca 56

A

p *f* *mp* *f sub p* *p* *ppppp*

f *p* *mf*

mf *mp* *mf*

B

con espressione rubato

Musical staff 1 of section B. It begins with a treble clef and a series of 'x' marks on the staff, indicating a tremolo or rapid oscillation. This is followed by a half note G4 with a fermata. The dynamic is marked *p*. The staff then continues with a triplet of eighth notes (F#4, G4, A4) and another triplet of eighth notes (B4, C5, B4). The dynamic is marked *mp*.

Musical staff 2 of section B. It features a triplet of eighth notes (B4, A4, G4), followed by a sextuplet of eighth notes (F#4, G4, A4, B4, C5, B4), and ends with a triplet of eighth notes (B4, A4, G4). The dynamic is marked *mp*.

Musical staff 3 of section B. It starts with the instruction *accel...* above the staff. The staff contains several triplets of eighth notes: (B4, A4, G4), (F#4, G4, A4), (B4, A4, G4), (F#4, G4, A4), and (B4, A4, G4). The piece concludes with a trill on G4. The dynamic is marked *f*.

C ♩ = ca 56

Musical staff 1 of section C. It begins with a trill on G4, indicated by '(tr)~~~~~'. This is followed by a series of 'x' marks on the staff. The staff then continues with a quarter note G4, a quarter note F#4, and a quarter note E4. The dynamic is marked *mp*.

Musical staff 2 of section C. It features a triplet of eighth notes (B4, A4, G4), followed by a triplet of eighth notes (F#4, G4, A4), and ends with a triplet of eighth notes (B4, A4, G4). The dynamics are marked *mp*, *mf*, and *mp* respectively.

Musical staff 3 of section C. It consists of five groups of sixteenth notes, each marked with a '6' below it, indicating sextuplets. The groups are: (B4, A4, G4, F#4, G4, A4), (F#4, G4, A4, B4, C5, B4), (B4, A4, G4, F#4, G4, A4), (F#4, G4, A4, B4, C5, B4), and (B4, A4, G4, F#4, G4, A4).

rit.

mf *ff*

(♩ = ca 56)

accel.

mf

D ♩ = ca 56

f *fff* *sf*

f *sf* *mf* *sf* *mf* *p*

E

senza vibrato

p *sf* *sf* *p* *p <-> ppp* *p*

F

rubato con espressione

p <-> p *p* *p* *p > p*

p *f*

3 *mf* *ff*

3 3 6 6 *f* *p*

5 6 *mf* *f* *mf*

G tranquillo sostenuto

f *p* *ppp* *p* *ppp*

p *p*

p *mp*